



**SANTA ANA COLLEGE
FACILITIES COMMITTEE MEETING
APRIL 16, 2019**



**SANTA ANA
COLLEGE**



PROJECTS

- ▶ Dunlap Hall Renovation - Completed
- ▶ Central Plant & Infrastructure - Completed
- ▶ Johnson Student Center & Demolition
- ▶ Science Center & Building J Demolition



PROJECT UPDATE SANTA ANA COLLEGE SCIENCE CENTER & BUILDING J DEMOLITION

Project Summary:

- ▶ Construction of a new three-story, 64,785 square foot science center and 880 square foot greenhouse
- ▶ Programs Include: Division Office, Faculty Offices, (2) Standard Classrooms, (1) Large Classroom, (1) Large Divisible Classroom, (1) Computer Lab, (1) Engineering Lab & Support Space, (6) Biology Labs & Support Space, (2) Geology Labs & Support Space, (5) Chemistry Labs & Support Space, (1) Physics Lab & Support Space, Student Collaboration Areas
- ▶ Project includes demolition of (3) J Buildings

Current Status:

- ▶ Structural Steel Construction Nearing Completion
- ▶ Exterior Mock-up Assembly On-going
- ▶ Welding of Structural Stairs On-going
- ▶ Interior Metal Framing On-going
- ▶ Exterior Scaffolding/Framing On-going
- ▶ Sheathing Interior of Parapets On-Going
- ▶ Roofing On-Going
- ▶ Target occupancy Summer 2020

Budget:

- ▶ New \$70.48 million





PROJECT UPDATE SANTA ANA COLLEGE JOHNSON STUDENT CENTER

Project Summary:

- ▶ Demolition of existing building.
- ▶ Construction of a 63,642 square foot new Johnson Student Center
- ▶ Building Programs Include: Campus Store, Grab-n-Go/Coffee & Juice, DSPS, EOPS/CARE & CalWORKS, Student Financial Services, SSSP/Upward Bound, Warehouse, Reprographics, Conference Center, Financial Aid, Student Placement, Health & Wellness Center, DSPS, Office of Student Life, ASG, The Spot
- ▶ Site improvements include new hardscape, landscape and shade shelter around the Johnson Center as well as renovations to the “West Plaza” including new landscape, hardscape, a shade structure, and a lunch serving kiosk for Middle College High School (MCHS)

Current Status:

- ▶ Building Foundations Demolition On-Going
- ▶ Sorting and Hauling of Demolition Debris On-Going
- ▶ New Expose/Abate Existing Underground Utilities
- ▶ Target occupancy Spring 2021

Budget:

- ▶ \$60 million
- ▶ \$58 million funded by Measure Q
- ▶ Note: The budget is currently deficient by \$2 million and a new budget update is pending upon a reallocation of budgets from the Central Plant project





SCHEDULED MAINTENANCE PROJECTS SANTA ANA COLLEGE

PROJECT	STATUS	ESTIMATED BUDGET
Window Replacement (H) (SM 16-17)	A deductive change order and Notice of Completion are anticipated for approval by the Board of Trustees on April 29, 2019.	\$731,535* * Budget Breakdown: <ul style="list-style-type: none"> • \$440,000 funded by SM17 • \$260,000 funded by the Campus • \$31,535 funded by Capital Facilities Fund
BR Library Restroom Upgrade (SM 18-19)	The hazardous materials report was provided to the District on March 1, 2019. An RFP for architectural services was solicited on March 6, 2019 with a due date of April 1, 2019. The District received one proposal and an agreement is anticipated for approval by the Board of Trustees at a future meeting.	\$431,479

CURRENT CAPITAL PROJECTS

RUSSELL HALL REPLACEMENT (HEALTH SCIENCES BUILDING)

Project Summary:

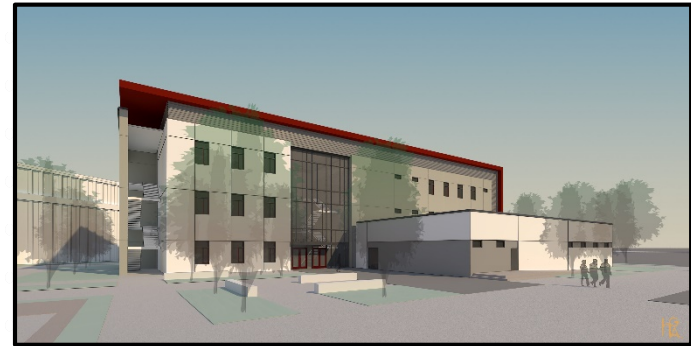
- ▶ Construction of a new 55,563 square foot Health Sciences Building to include Nursing, Occupational Therapy Technology, Emergency Medical Services, Pharmacy Technology, general classrooms and computer labs. The new building will be located south of the existing library and north of the new Science Center
- ▶ Demolition of existing Russell Hall Building
- ▶ The District will have to adhere to a strict state process and guidelines

Current Status:

- ▶ 100% construction documents were submitted to the District on January 4, 2019 and the District completed the review on February 8, 2019
- ▶ DSA submittal anticipated Spring 2019
- ▶ DSA approval anticipated Winter 2019
- ▶ Target construction start Spring 2020
- ▶ Target occupancy Summer/Fall 2022
- ▶ Demolition anticipated to start Summer/Fall 2022

Budget:

- ▶ \$58.8 million
- ▶ \$20,475,000 state funded (estimated contribution)
- ▶ Budget under review





RUSSELL HALL REPLACEMENT SECONDARY EFFECTS AND RELOCATIONS SANTA ANA COLLEGE

PROJECT	STATUS	ESTIMATED BUDGET
Campus Entrance Improvements	This project is in the initial start-up of planning. The on-call estimator has created a new target cost budget as a result of needed site restoration once Russell Hall is demolished. The anticipated construction cost is estimated to be \$6-\$8 million and a total project budget in the range of \$10-\$12 million depending on whether or not we have to repair or reconstruct the front entrance of 17th Street. Currently, the District is working on the traffic engineering consultant services agreement.	TBD (Under Review)
Secondary Effect Relocations	User group meetings with college staff to discuss various relocations as a result of the demolition of Russell Hall occurred on January 15 and 16, 2019 and are on-going. The last meeting occurred on March 12, 2019.	TBD (Under Review)

CURRENT CAPITAL PROJECTS

SANTA ANA COLLEGE

PROJECT	STATUS	ESTIMATED BUDGET
Campus Directory (Electronic)	A meeting for the campus and the District to review final drawings before submitting to DSA occurred on March 28, 2019. The architect will make more changes to the drawings before submitting to DSA as a result of the meeting. Another site visit will take place with Campus Safety and staff to verify locations of the new electronic directories.	\$272,613
Barrier Removal Signage/Wayfinding	A meeting for the campus and the District to review final drawings before submitting to DSA occurred on March 28, 2019. The architect will make more changes to the drawings before submitting to DSA as a result of the meeting. A test mock-up of large lettering was installed on Dunlap Hall. This is to assist in determining the final color and/or colors for the aluminum lettering to be utilized on all buildings to create a standard for the college.	\$345,025



CURRENT CAPITAL PROJECTS

SANTA ANA COLLEGE

PROJECT	STATUS	ESTIMATED BUDGET
ITS Copper Wire	With the completion of the Central Plant project, new twisted pair copper wire lines were installed to replace the old lines as part of the infrastructure improvements across campus. These copper lines were replaced and then terminated (landed) at 22 buildings on campus at their respective Intermediate Distribution Frame (IDF) rooms or the Building Distribution Frame (BDF) rooms associated with the buildings. The new copper lines provide connectivity to support service for telephone voice systems, emergency telephone lines, elevator telephones, and fax machines. It is the intent of ITS to now abandon the old lines and utilize the new copper lines. The new copper lines are installed at each major building on the campus which are then directly connected back to the campus's main computer communication center located at the Chavez Building (S). The architect's assessment is underway with ITS for the transition at each building from the old lines to the new lines. This project is required to be submitted to DSA for approval before it can be implemented.	\$474,339



YEAR FIVE PROP 39 PROJECTS

SANTA ANA COLLEGE LIGHTING OCCUPANCY SENSOR RETROFIT

Project Summary:

- ▶ This is a new project to spend down the surplus budget from the previous Year 5 project

Current Status:

- ▶ Most of the work will be completed during the weekends and during the spring break
- ▶ The project is anticipated to be completed and closed out with the state in June

Budget:

- ▶ \$150,000



CURRENT PROJECTS DISTRICT-WIDE

PROJECT	STATUS	ESTIMATED BUDGET
District-Wide Emergency Blue Phone & ADA Path of Travel (SAC, SCC, CEC, DO, OCSRТА, DMC)	Bids for SAC were due March 13, 2019. A recommendation to reject all bids is anticipated for approval by the Board of Trustees on April 16, 2019 as the two bids received were deemed non-responsive due to failure to acknowledge the addendum. Both SAC and SCC projects will likely now bid for summer/fall work installation as the schedules are currently under review. DO and CEC have yet to be scheduled.	\$1.9 Million



CURRENT PROJECTS DISTRICT-WIDE

PROJECT	STATUS	ESTIMATED BUDGET
District-Wide Access Control & Door Hardware Survey Assessments	<p>A. The District has decided to test pilot the installation of a new door access control system at the District Operations Center prior to a full roll out districtwide.</p> <p>B. The project entails upgrading the existing access control system, adding new access control hardware & readers at select locations, adding exterior door monitoring equipment, integrating into an existing district-wide access control platform, which is planned to be installed under the Science Center project.</p>	\$101,500
AR 6520 Safety of District Property – Keying Guidelines	C. A meeting was held with both Colleges members of President’s Cabinet to discuss the key hierarchy and organization of keying per building. A subsequent internal meeting will be scheduled to review the key distribution samples from other districts and Draft Administrative Regulation on procedures as this is currently a work in progress.	N/A
Future Retrofit & Access Control Project	D. AR 6520 will be updated once the guidelines are completely developed. A new plan will be developed as part of this planning process as the last step is to identify future projects, building door retrofits (i.e. hardware changes, for locks, access control, etc.). This is currently under review and in planning by the District.	TBD



ADA TRANSITION PLANNING UPDATE AND SELF EVALUATION

Next Steps:

- ▶ The report was shared at the Board of Trustees meeting on March 25, 2019
- ▶ The District along with the Colleges will need to continue to work on addressing the recommendations outlined in the plan for both program services as noted in the Section 504 Self-Evaluation along with the Facility Barrier Removal Improvements as noted in the updated Transition Plan
- ▶ Facilities Deficiencies
 - ▶ 10,276 District-wide (2016 Assessment)
 - ▶ SAC has 5,593 of which 4.95% have been corrected as of November 2018



QUESTIONS